

# The Wilmington Estate

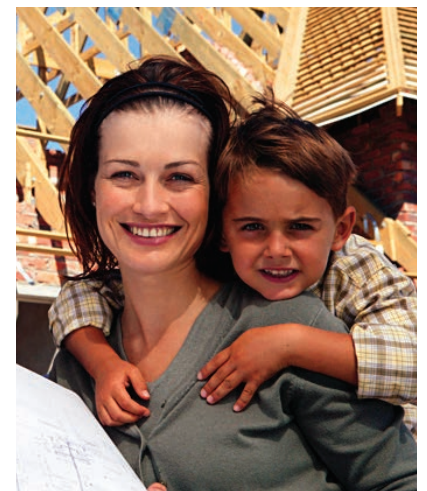
## At a Glance...

LIVING AREA	3668 sq. ft.
BEDROOMS	3 Bedrooms
BATHS	3.5 Bath



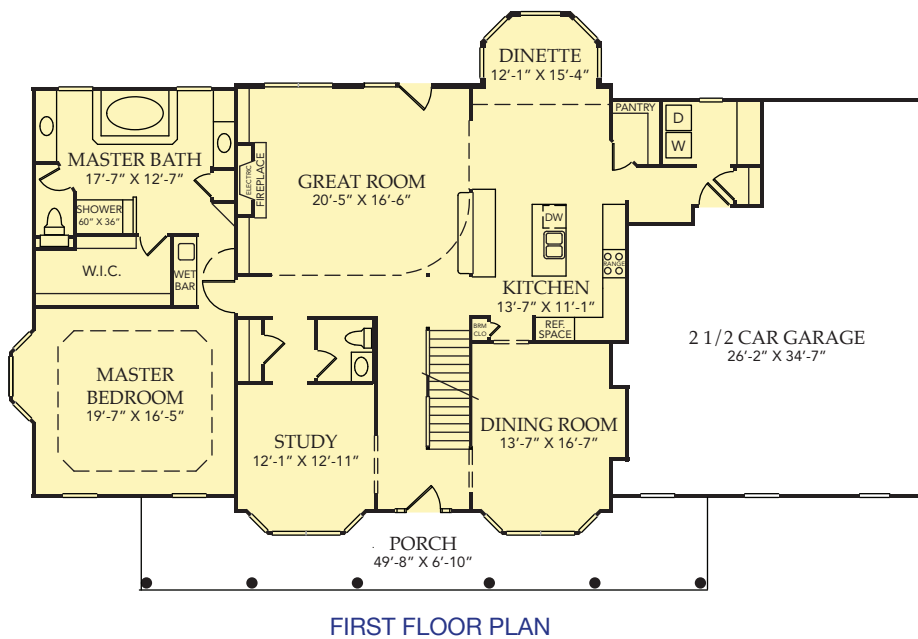
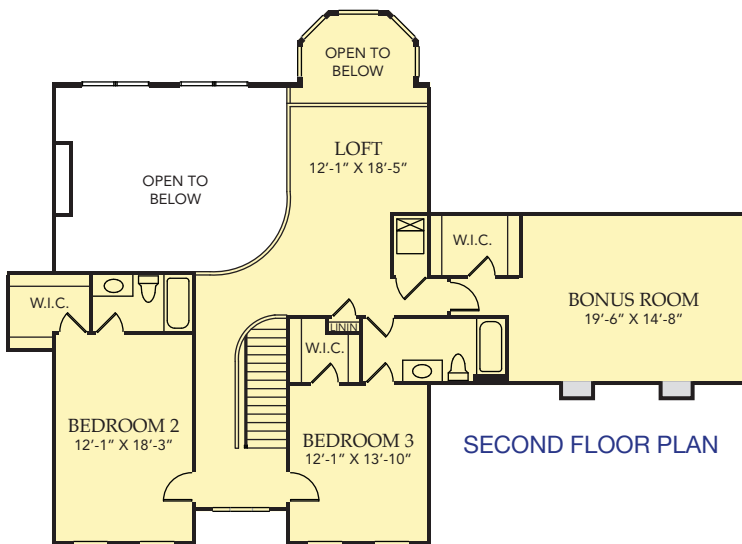
The Wilmington Estate has a worthy combination of brick and siding along with a tasteful dormer display added to the front roof. Bold columns and a large front porch welcome guests inside to a custom curved oak ballustrade system crafted on site. A two story rear dinette turret gives a roomy open feel. The second floor has a second-story bonus room above the garage perfect for crafts, teenagers or a game room.

## Start Your Dream Today



*Your dreams built on your land*

# The Wilmington Estate



## Design Features

- LIVING AREA 3668 sq. ft.
- 1<sup>ST</sup> FLOOR 2214 s.f.
- 2<sup>ND</sup> FLOOR 1473 s.f.
- BEDROOMS 3 Bedrooms
- BATHS 3.5 bath
  
- PORCH 7' deep
- KITCHEN Open style
- DINETTE With Full Bay

### WHAT CUSTOMERS ARE SAYING

"The interior design is what sold us on this home. The little details such as the bay window in master and tray ceiling really set this home apart. The octagonal breakfast area and bay window in the master bedroom also added to the exterior appeal."

- Linda Castellucio

## Start Your Dream Today



A Greystone Country Homes Company



*Your dreams built on your land*